

Salisbury & District Angling Club

Centre for Riverfly Conservation

The Summer Mayflies

Summer Mayfly - *Siphonurus lacustris*

Northern Summer Mayfly - *Siphonurus alternatus*

Scarce Summer Mayfly - *Siphonurus armatus*

Early Summer Mayfly - *Siphonurus aestivalis*



Dr Cyril Bennett MBE

Siphonurus lacustris

Summer Mayfly



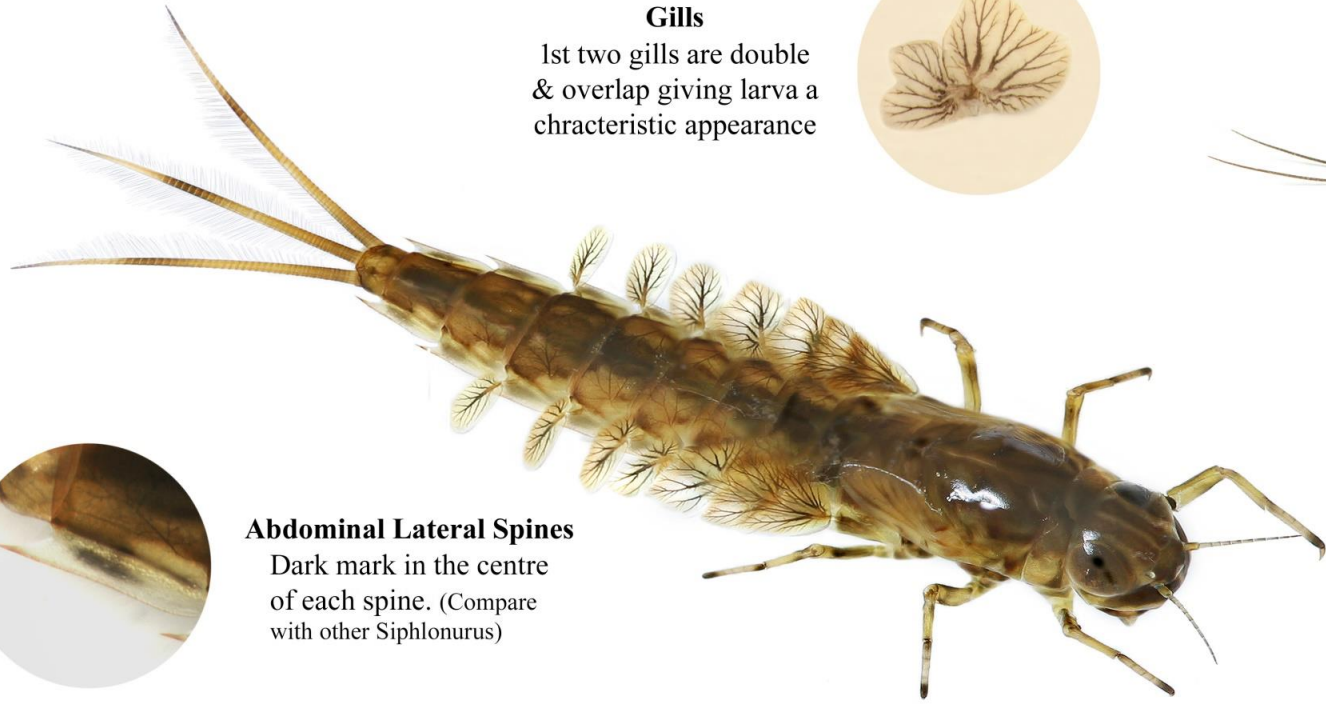
Woodland Stream - Ewden Beck - Yorkshire

Salisbury & District Angling Club
Centre for Riverfly Conservation

Family - Siphonuridae

Pollution & Flow		
Sediments	C	Mildly sensitive
Organic	B	Sensitive
Flow	D	Tolerant
Conservation	4	Occasional

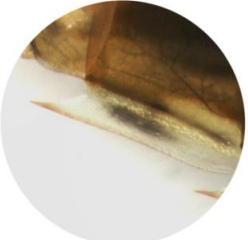
Flight Period											
J	F	M	A	M	J	J	A	S	O	N	D



Gills
1st two gills are double & overlap giving larva a characteristic appearance



Adult
Female subimago

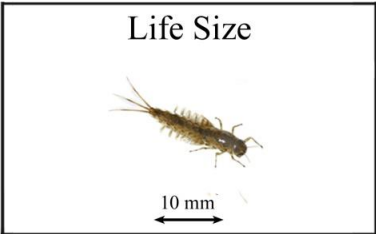


Abdominal Lateral Spines
Dark mark in the centre of each spine. (Compare with other Siphonurus)



Habitat & Distribution
A local species normally found in lakes and, slow flowing sections of streams & rivers at high altitude.

Nymphs collected from Ewden Beck in Yorkshire.



Siphonurus lacustris
Summer Mayfly

Flight Period											
J	F	M	A	M	J	J	A	S	O	N	D

Salisbury & District Angling Club
Centre for Riverfly Conservation

Family - Siphonuridae



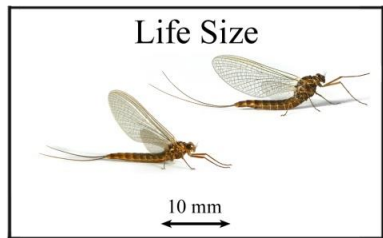
Female imago

Female subimago

A somewhat localised species mainly found on rivers, streams and lakes at high altitude.

Emergence takes place after crawling out of the water on a stone or plant stem.

Males can be seen swarming during most of the day and, after mating, the females fly over the water releasing a few eggs at a time by dipping the abdomen into the water. Females produce up to 2,500 eggs.



Siphonurus lacustris
Summer Mayfly

Siphonurus alternatus
Northern Summer Mayfly



Drumpail Burn - Dumfries & Galloway

Salisbury & District Angling Club
Centre for Riverfly Conservation

Family - Siphonuridae

Pollution & Flow		
Sediments	C	Mildly sensitive
Organic	B	Sensitive
Flow	D	Tolerant
Conservation	10	Endangered

Flight Period											
J	F	M	A	M	J	J	A	S	O	N	D

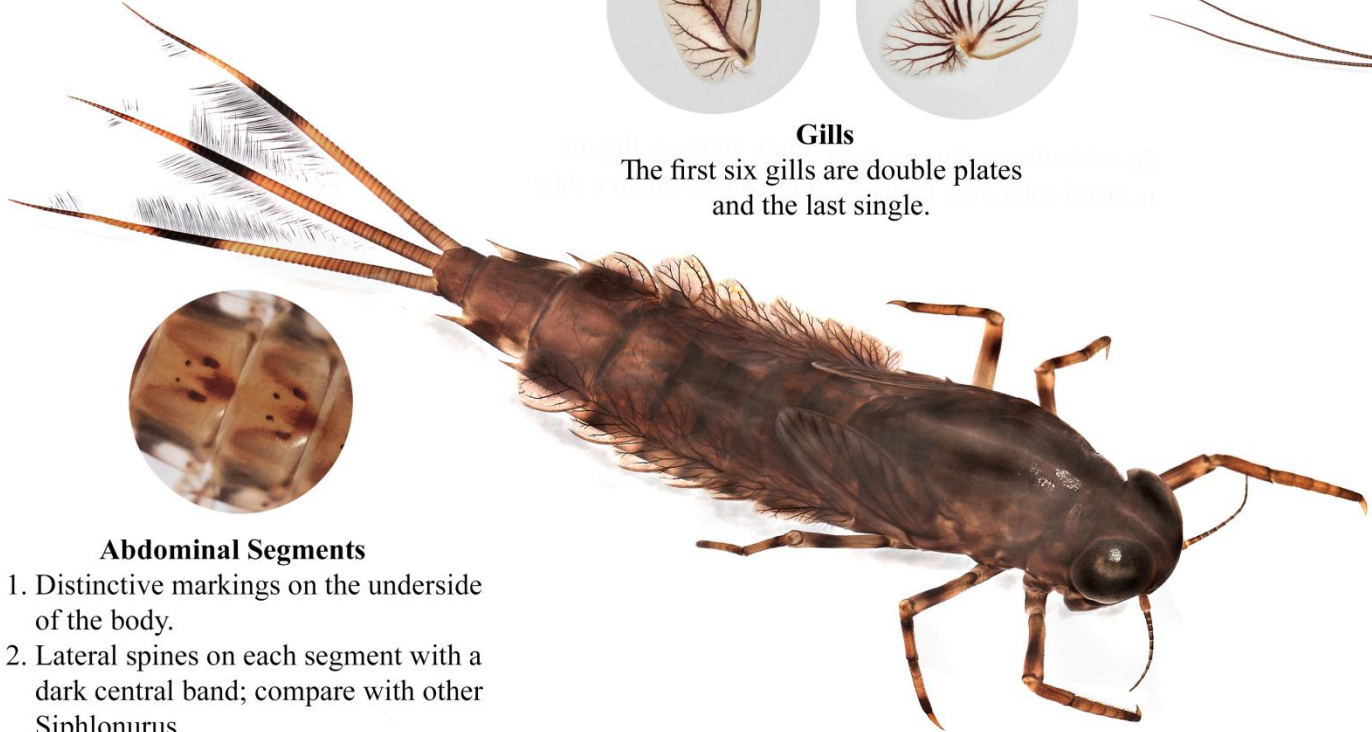


Gills

The first six gills are double plates and the last single.



Adult
Female subimago



Abdominal Segments

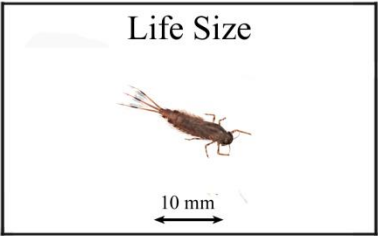
1. Distinctive markings on the underside of the body.
2. Lateral spines on each segment with a dark central band; compare with other Siphonurus.



Habitat & Distribution

Nymphs are typically found in the deep pools of rivers & streams, and also in some calcareous lakes. This is a rare and endangered species and whilst there are very few published records, it seems to be restricted to the rivers of Scotland, Northern England and Ireland.

Site locations supplied by Craig Macadam & nymphs collected from Drumpail Burn (Dumfries & Galloway) by Andrew Farr.



Siphonurus alternatus
Northern Summer Mayfly

Flight Period											
J	F	M	A	M	J	J	A	S	O	N	D

Salisbury & District Angling Club

Centre for Riverfly Conservation

Family - Siphonuridae

Identification Features

1. Hindwings with a distinctive pale border at the edges.
2. Redish band on each femur before the junction with the tibia.
3. Ventral surface of abdomen with a pattern of black dots & stripes. (see imago chart)

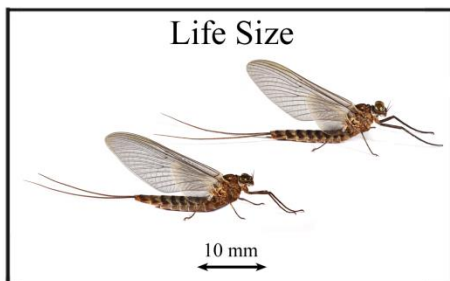


Male subimago

Female subimago

This is a rare and endangered species and whilst there are very few published records, it seems to be restricted to the rivers of Scotland, Northern England and Ireland. Emergence is during daylight hours, probably with one generation a year and overwintering eggs

Site locations supplied by Craig Macadam & nymphs collected from Drumpail Burn (Dumfries & Galloway) by Andrew Farr.



Life Size

Siphonurus alternatus

Northern Summer Mayfly

Flight Period											
J	F	M	A	M	J	J	A	S	O	N	D

Salisbury & District Angling Club
Centre for Riverfly Conservation

Family - Siphonuridae



Male imago



Female imago

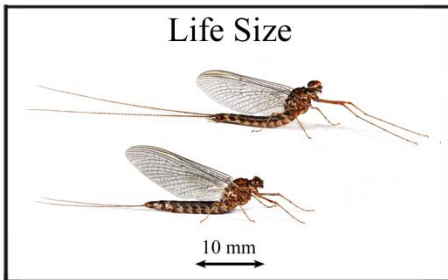
Identification Features

1. Reddish band on each femur before the junction with the tibia.
2. Ventral surface of abdomen with a pattern of black dots & stripes.



This is a rare and endangered species and whilst there are very few published records, it seems to be restricted to the rivers of Scotland, Northern England and Ireland. Emergence is during daylight hours, probably with one generation a year and overwintering eggs

Site locations supplied by Craig Macadam & nymphs collected from Drumpail Burn (Dumfries & Galloway) by Andrew Farr.



Siphonurus alternatus
Northern Summer Mayfly

Siphonurus armatus
Scarce Summer Mayfly



Woodland Stream - Surrey (Forestry Commission)

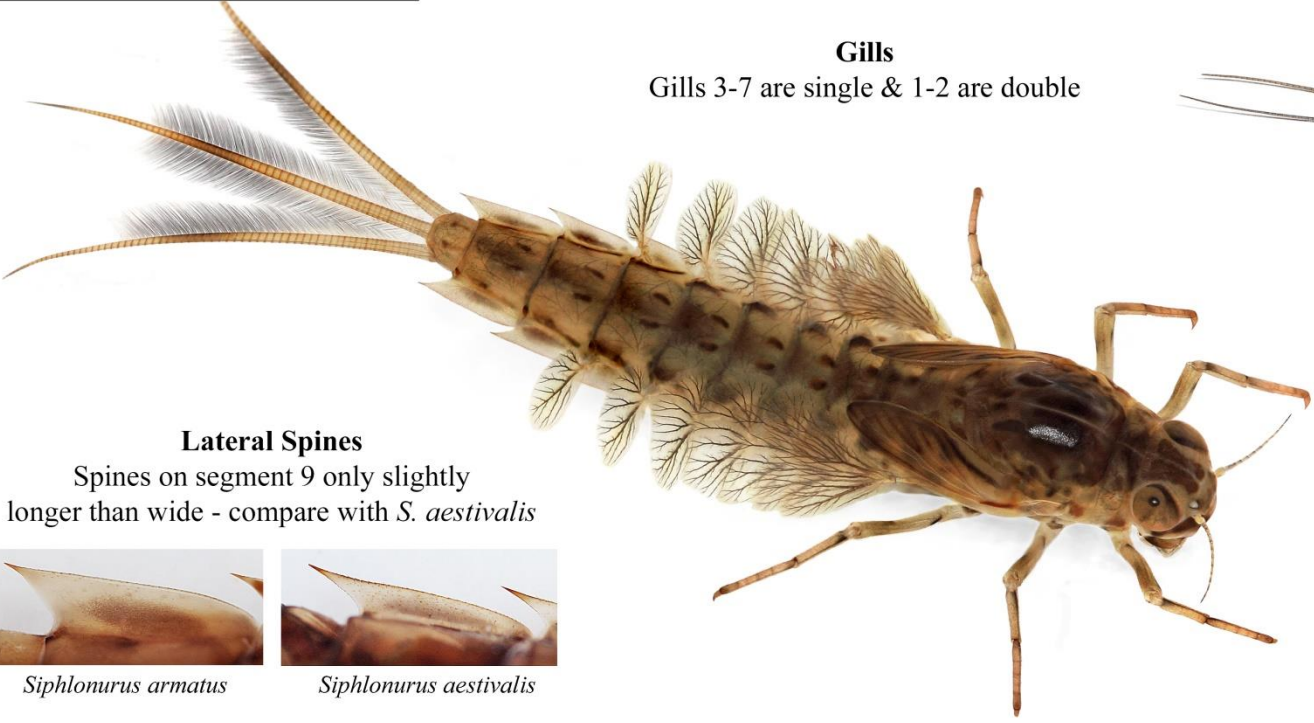
Salisbury & District Angling Club

Centre for Riverfly Conservation

Family - Siphonuridae

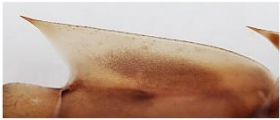
Pollution & Flow		
Sediments	0	Taxon not used
Organic	0	Taxon not used
Flow	0	Taxon not used
Conservation	10	Endangered

Flight Period											
J	F	M	A	M	J	J	A	S	O	N	D



Gills
Gills 3-7 are single & 1-2 are double

Lateral Spines
Spines on segment 9 only slightly longer than wide - compare with *S. aestivalis*



Siphonurus armatus



Siphonurus aestivalis



Life Size

10 mm

Siphonurus armatus

Scarce Summer Mayfly

FSC - Pictorial Guide to British Ephemeroptera - Page 121



Adult
Female subimago



Habitat & Distribution
Larva found in ponds and streams with a very low current, particularly with intermittent flows. This is a rare and endangered species recorded at only a few woodland locations, particularly amongst tree roots.

Site locations and larva supplied by Craig Macadam & Andrew Farr.

Flight Period											
J	F	M	A	M	J	J	A	S	O	N	D

Salisbury & District Angling Club
Centre for Riverfly Conservation

Family - Siphonuridae



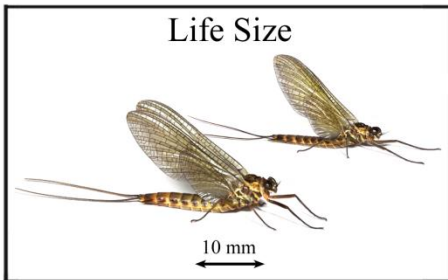
Female subimago



Male subimago

This is a rare and endangered species recorded at only a few woodland locations. There is probably one generation a year and with overwintering eggs. Emergence is during daylight hours and males can be seen swarming at dawn and dusk.

Site locations and larva supplied by Craig Macadam & Andrew Farr



Life Size

10 mm

Siphonurus armatus
Scarce Summer Mayfly

Flight Period											
J	F	M	A	M	J	J	A	S	O	N	D

Salisbury & District Angling Club
Centre for Riverfly Conservation

Family - Siphonuridae

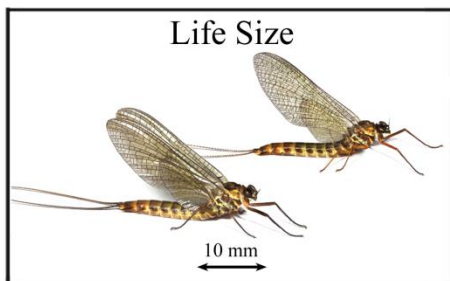


Female subimago

Female imago

This is a rare and endangered species recorded at only a few woodland locations. There is probably one generation a year and with overwintering eggs. Emergence is during daylight hours and males can be seen swarming at dawn and dusk.

Site locations and larva supplied by Craig Macadam & Andrew Farr



Siphonurus armatus
Scarce Summer Mayfly

Siphonurus aestivalis

Early Summer Mayfly



Woodland St

Darwell Reservoir - Sussex

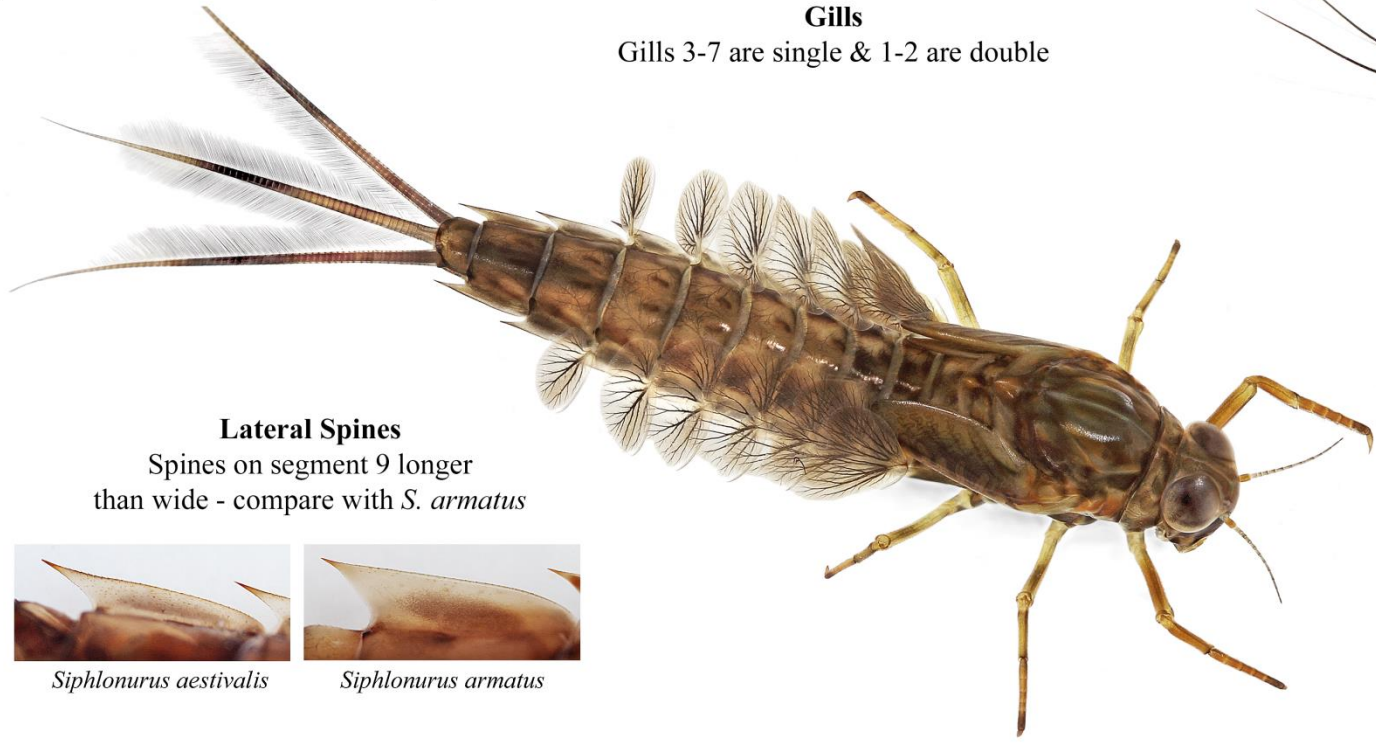
Salisbury & District Angling Club

Centre for Riverfly Conservation

Family - Siphonuridae

Pollution & Flow		
Sediments	0	Taxon not used
Organic	0	Taxon not used
Flow	0	Taxon not used
Conservation	3	Frequent

Flight Period											
J	F	M	A	M	J	J	A	S	O	N	D



Gills
Gills 3-7 are single & 1-2 are double

Lateral Spines
Spines on segment 9 longer than wide - compare with *S. armatus*



Siphonurus aestivalis *Siphonurus armatus*



Adult
Male subimago



Habitat & Distribution
A new species to the British Isles* previously recorded as *S. armatus*. Larvae found in slow flowing reaches of rivers, ponds and near the shores of lakes and reservoirs, usually in vegetation.

* Macadam C. & Farr A. 2021 - A new British Mayfly: *Siphonurus aestivalis* (Eaton, 1903) (Ephemeroptera: Siphonuridae). *Entomologists Monthly Magazine* 157: 0-0



Siphonurus aestivalis

Early Summer Mayfly

FSC Pictorial Guide to British Ephemeroptera - To be added

Flight Period											
J	F	M	A	M	J	J	A	S	O	N	D

Salisbury & District Angling Club
Centre for Riverfly Conservation

Family - Siphonuridae



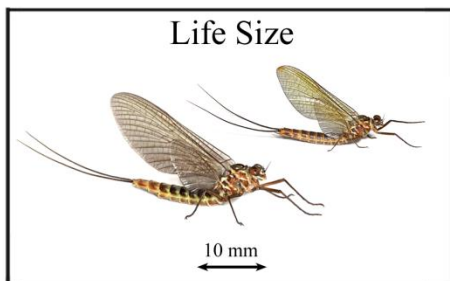
Female subimago



Male subimago

This is a new species to the British Isles*- previously recorded as *S. armatus*. Found on slow flowing rivers, ponds and near the shores of lakes and resevoirs, usually in vegetation

* Macadam C. & Farr A. 2121 - A new British Mayfly: *Siplonurua aestivalis* (Eaton, 1903) (Ephemeroptera: Siphonuridae). *Entomologists Monthly Magazine* 157: 0-0



Siphonurus aestivalis
Early Summer Mayfly

FSC Pictorial Guide to British Ephemeroptera - to be added

Copyright © Cyril Bennett

Flight Period											
J	F	M	A	M	J	J	A	S	O	N	D

Salisbury & District Angling Club
Centre for Riverfly Conservation

Family - Siphonuridae

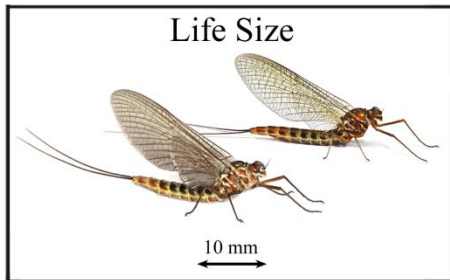


Female imago

Female subimago

This is a new species to the British Isles* - previously recorded as *S. armatus*. Found on slow flowing rivers, ponds and near the shores of lakes and resevoirs, usually in vegetation

* Macadam C. & Farr A. 2121 - A new British Mayfly: *Siplonurua aestivalis* (Eaton, 1903) (Ephemeroptera: Siphonuridae). *Entomologists Monthly Magazine* 157: 0-0



Siphonurus aestivalis
Early Summer Mayfly

FSC Pictorial Guide to British Ephemeroptera - to be added

Copyright © Cyril Bennett